

Arizona Game & Fish Department's Monofilament Recovery Program

A
Cooperative
Effort To
Protect
Wildlife!



Introduction

PROBLEMS:

- ❖ Improper disposal of monofilament line.
- ❖ Breakage of line.
- ❖ Bald eagles have been injured or died.

ACTIONS:

- ❖ AZGFD began the Monofilament Recovery Program.
- ❖ Monofilament recycling containers and bins are being placed.
- ❖ Monofilament and fishing tackle are removed from bald eagle nests.
- ❖ Outreach.





What is Monofilament?

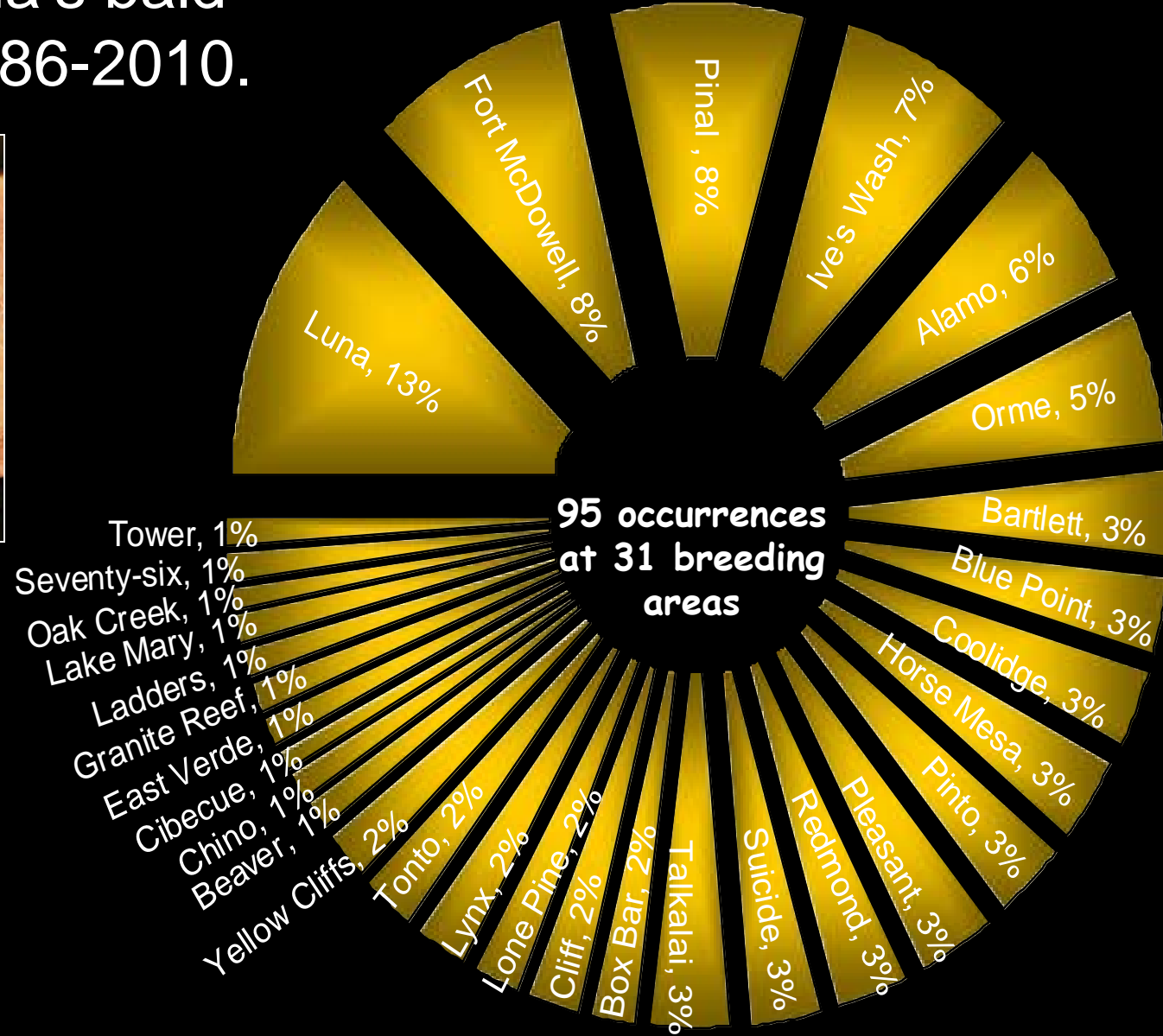
- invisible in water
- strong
- potentially hazardous

Estimated Decomposition Rates for Common Debris

Paper Towel	4 weeks*
Cloth	1-5 Months
Apple Core	2 Months*
Juice Carton	3 Months*
Cigarette Butt	1 to 80 Years
Steel Can	50 Years*
Aluminum Can	200 to 500 Years
Plastic bottle	450 to 550 Years
Monofilament line	500 to 600 Years
Glass Bottle	1,000,000 years
Styrofoam	never?

*Indicates decomposition in saltwater.

Monofilament and tackle found in Arizona's bald eagle nests 1986-2010.





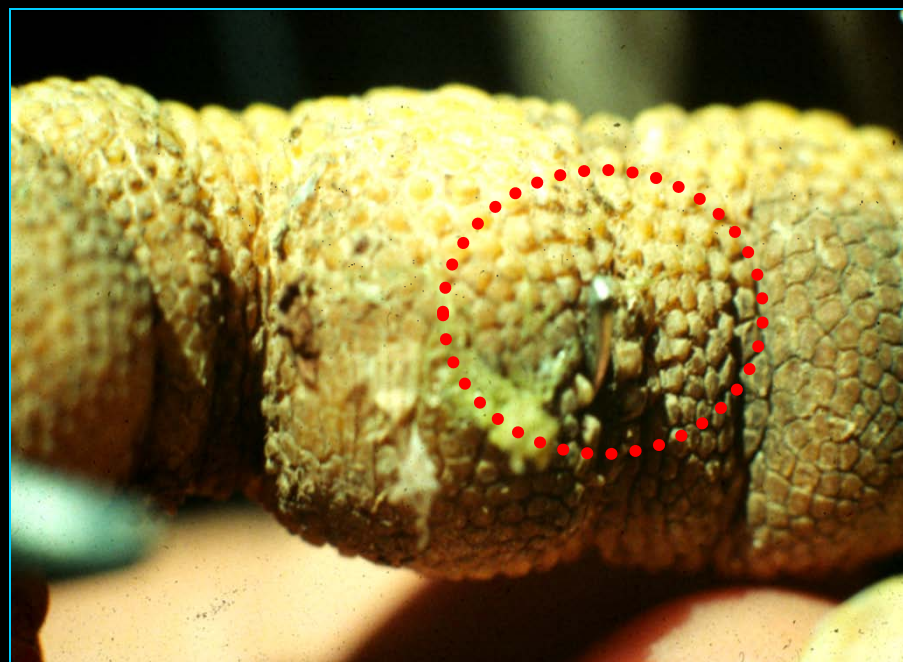
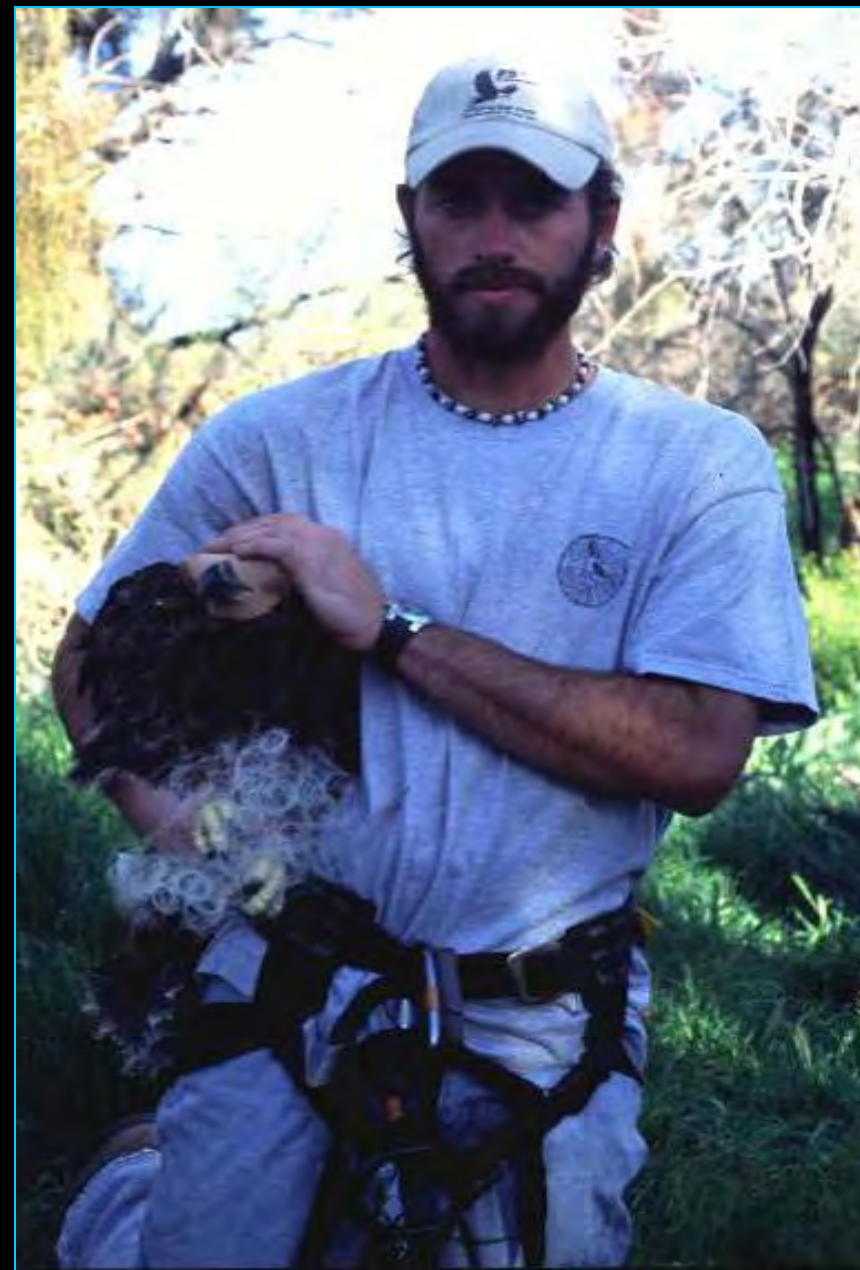


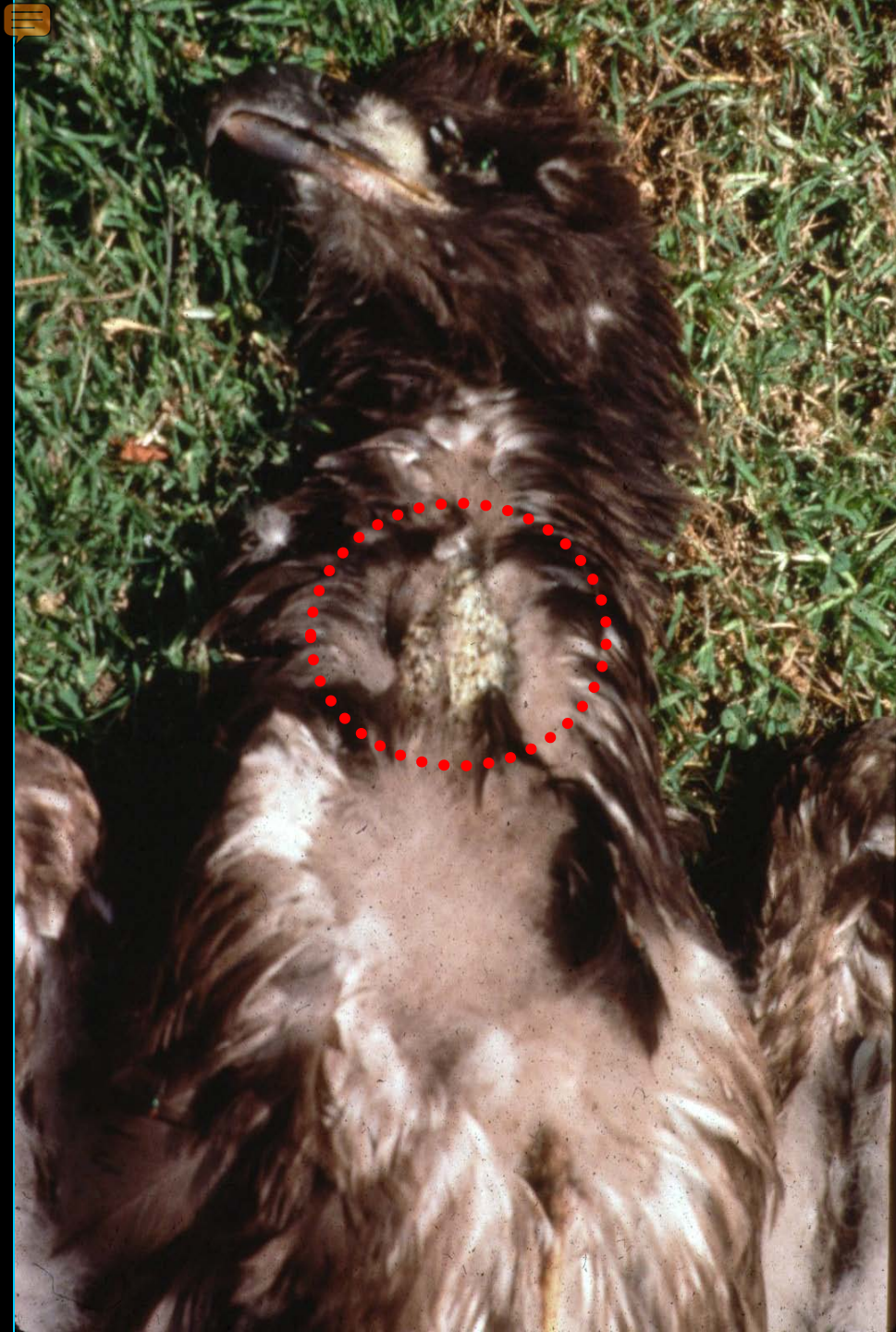
Entanglement

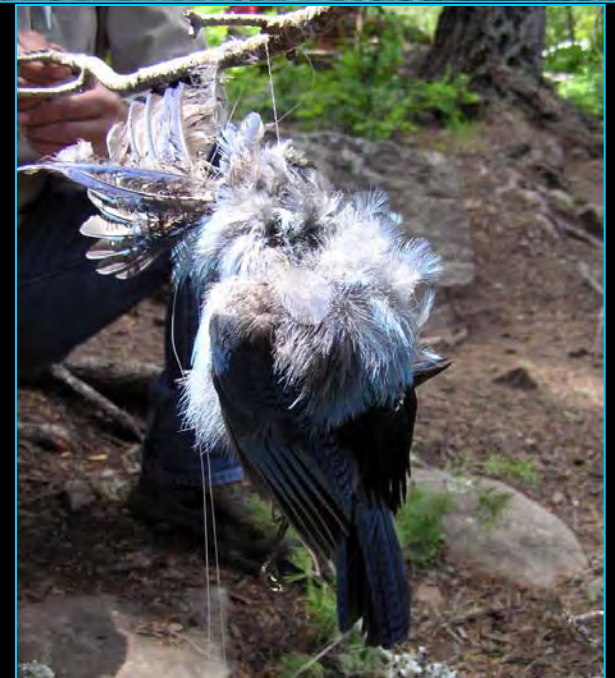
- ❖ Inability to get free.
- ❖ Loss of limbs.
- ❖ Cuts and infections.
- ❖ Drowning.
- ❖ Starvation.













Ingestion

- ❖ Chemicals.
- ❖ False sense of fullness.
- ❖ Obstruction of normal functions.





Monofilament Recovery Program

PHASE I



PHASE II



Phase I

Monofilament Recovery Containers



Phase II

Monofilament Recovery Bins



**DON'T LEAVE
YOUR LINE BEHIND!**

**HELP KEEP OUR
WATERWAYS
TANGLE
FREE!**

**RECYCLE YOUR
USED
MONOFILAMENT
HERE.**



Fishing companies like Berkley[®] and Stren[®] will convert recovered monofilament into plastic pellets used to make tackle boxes, lures, and artificial fish habitats.

What Happens to Recycled Monofilament?

Line is collected



Line is melted down



Raw plastic pellets are created and sold to make plastic products

Tackle Boxes
Fish Habitats
Toys
Spools for Line





ATTENTION SPORTSMEN

A bear camp is required to bear camp with you in certain areas.

Please notify 911 in this state to see how the state, and the national outdoor center. LA. Fishing license is required to be 16 or older. The state has a bear camp. Please call 202-343-8888 for more information.

The state has a bear camp. Please call 202-343-8888 for more information.

The state has a bear camp. Please call 202-343-8888 for more information.

The state has a bear camp. Please call 202-343-8888 for more information.

DON'T LEAVE YOUR LINE BEHIND

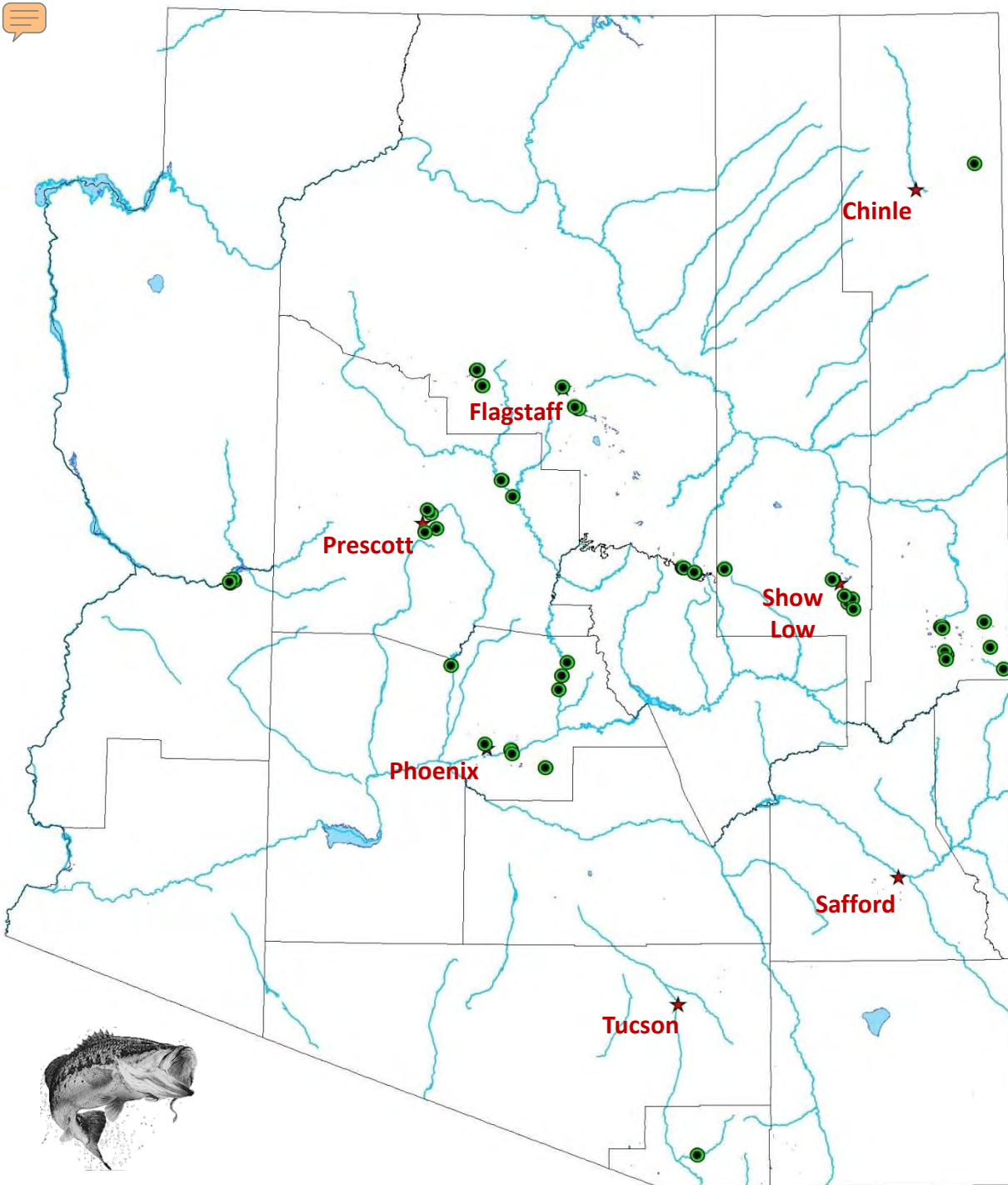
HELP KEEP OUR WATERWAYS TANGLE FREE!

RECYCLE YOUR USED MONOFILAMENT HERE.

DON'T LEAVE YOUR LINE BEHIND

HELP KEEP OUR WATERWAYS TANGLE FREE!

RECYCLE YOUR USED MONOFILAMENT HERE.



Monofilament recycling bins

At least 75 bins
in 40 locations





How is MRP untangling the problem?

- Public education
- Recovery network
- Cleanup events

What can you do?

- Take the initiative
- Volunteer
- Use the appropriate test line
- Replace monofilament yearly
- Recycle



Southwestern Bald Eagle Management Committee

- ✦ Arizona Game and Fish Department – Chair
- ✦ Arizona Army National Guard
- ✦ Arizona Department of Transportation
- ✦ Arizona Public Service
- ✦ Arizona State Parks
- ✦ American Eagle Research Institute
- ✦ Army Corps of Engineers
- ✦ Bureau of Indian Affairs
- ✦ Bureau of Land Management
- ✦ Bureau of Reclamation
- ✦ Fort McDowell Yavapai Nation
- ✦ Freeport McMoRan
- ✦ GeoMarine Incorporated
- ✦ Gila River Indian Community
- ✦ The Hopi Tribe
- ✦ Maricopa County Parks and Recreation Department
- ✦ National Park Service
- ✦ Navajo Nation
- ✦ Salt River Pima-Maricopa Indian Community
- ✦ Salt River Project
- ✦ San Carlos Apache Tribe
- ✦ Tonto Apache Tribe
- ✦ U.S. Department of Defense
- ✦ U.S. Fish and Wildlife Service
- ✦ U.S. Forest Service
- ✦ White Mountain Apache Tribe

www.swbemc.org

